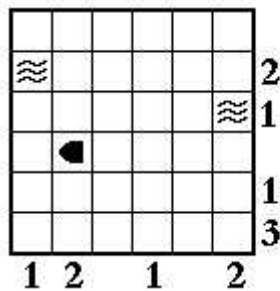
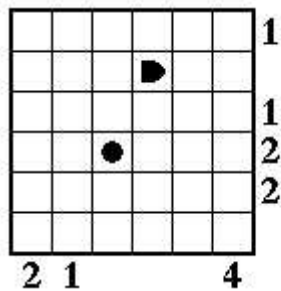
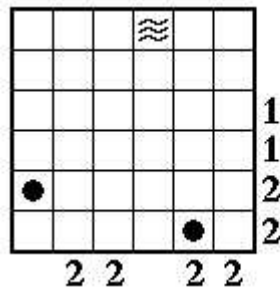
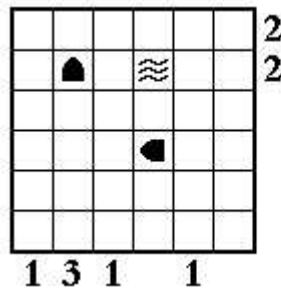
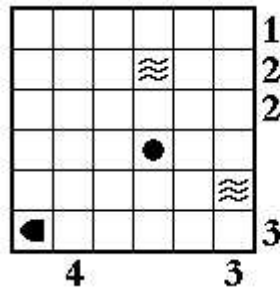
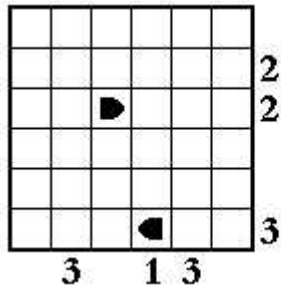


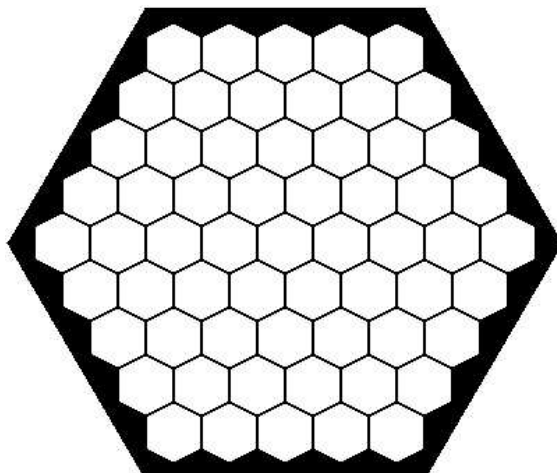
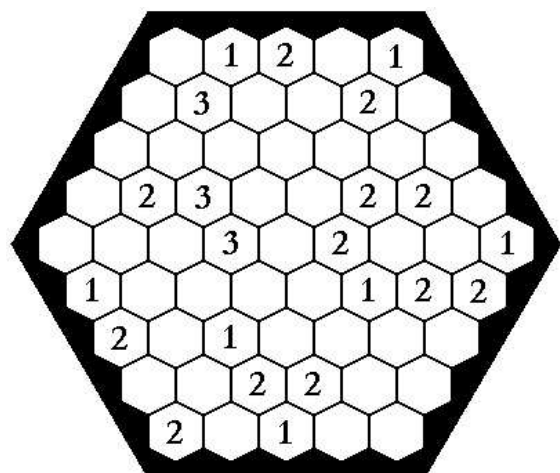
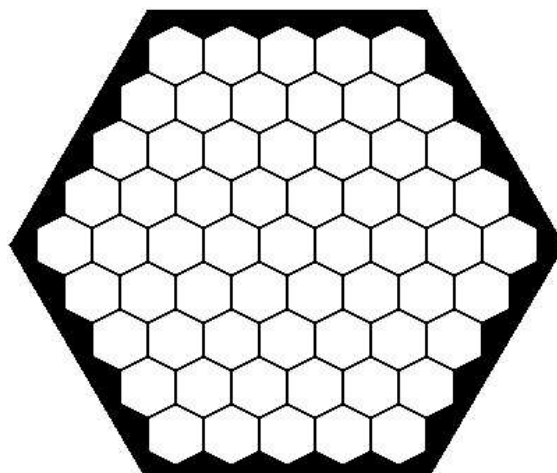
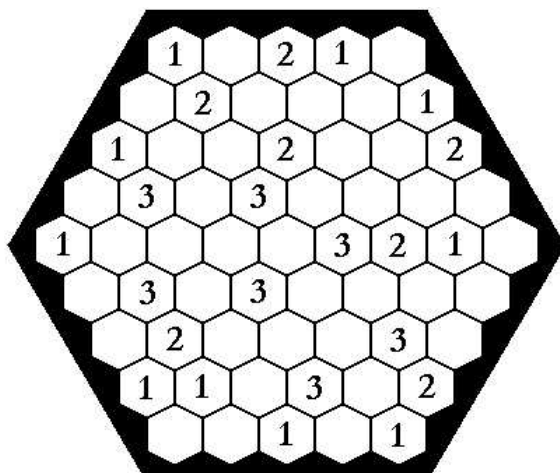
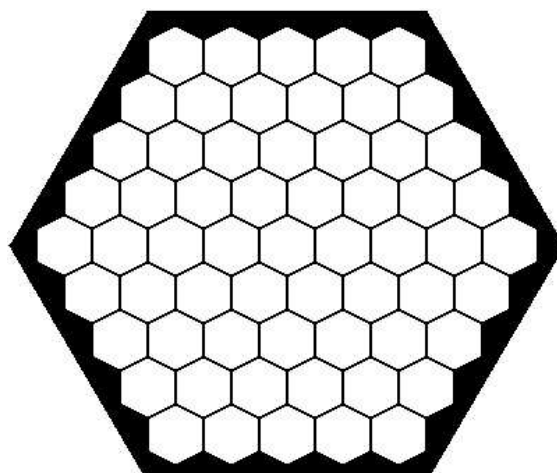
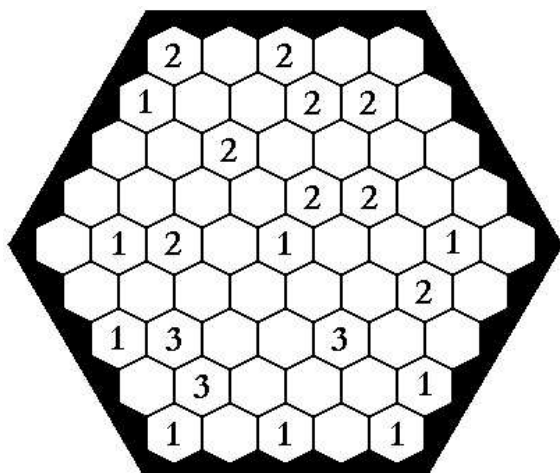
Battle Ships #1 (*-**)

On all the maps 6 ships are floating around. The numbers in the sideline tell you how many parts of ships are hidden in that row or column (some are not given). The exact shape of the ships is given right next to the map. Ships do not touch, not even diagonally. Where are the ships situated?



Double Puzzle: Hexagonal Treasure Island/Honeycombs (**)

On these island 14, 16 and 16 diamonds respectively have been hidden. The numbers tell you how many diamonds you can find in the adjacent cells. Cells containing a number cannot also contain a diamond. Where are the diamonds hidden? After this problem is solved, color the diamond containing cells (so 14, 16 and 16 cells respectively) black and you get a honeycomb puzzle: Divide these grids into 6 areas of 6 interconnected hexagons by coloring some extra hexagons black.



Mastermind (*-***)

Find out the correct sequence of 4 or 5 digits. "●" means one correct digit on a correct spot. "○" means a correct digit on a wrong spot. Only digits 1 to 9 are allowed. And all digits can appear more than once in the sequence.

4561	●○
3427	●○
2778	○○
6842	●
<hr/>	
	●●●●

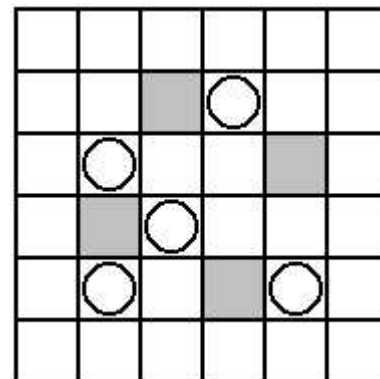
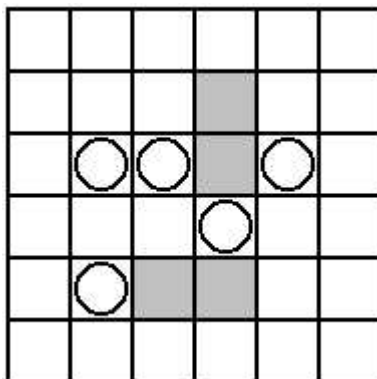
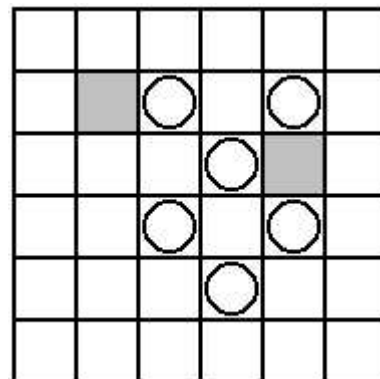
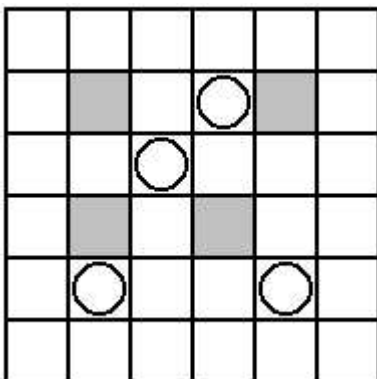
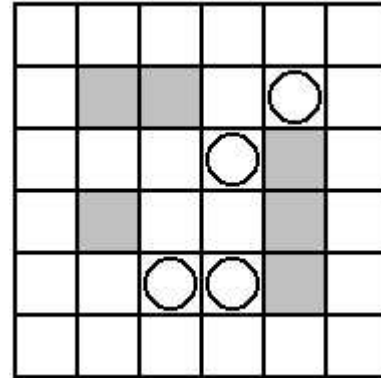
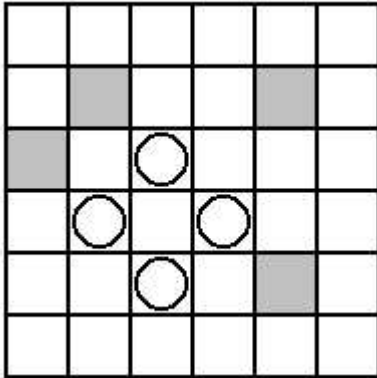
4561	●○○
3427	●○
2778	●
6842	○○○
<hr/>	
	●●●●

29347	●●
43589	●○○○
85436	●○○
16794	●○
<hr/>	
	●●●●●

29347	●
43589	●○○
85436	○○
16794	●●
<hr/>	
	●●●●●

Line drawing (*-**)

Draw one continuous line that visits all cells. In a cell with a circle you are not allowed to take a turn. In a gray cell you have to make a turn (of 90 degrees). In every other cell you can do what ever you like. Draw the line.



Please fill in the evaluation-form, it won't take a minute and it keeps the author happy!

(<http://www.home.zonnet.nl/kostunix/evalform08.html>)